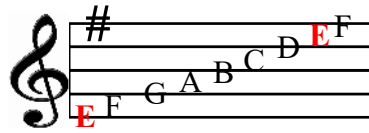


Key of G Major/ E minor

KEY G/Em



**E** F# G A B C D **E**  
1 2 3 4 5 6 7 1

Em = Same notes as G Major but the root note is E not G

### Verse

Phrase 1

Phrase 2

Phrase 3

Phrase 4

Phrase 5

Phrase 6

### Part 2

Phrase 7

Phrase 8

Phrase 9

### Outro

Most of the solo uses notes from this pattern / shape.

E	F#	G	A	B	C	D	E	F#	G
B	C	D	E	F#	G	A	B	C	D
G	A	B	C	D	E	F#	G	A	B
D	E	F#	G	A	B	C	D	E	F#
A	B	C	D	E	F#	G	A	B	C
E	F#	G	A	B	C	D	E	F#	G
1	2	3	4	5	6	7	8	9	10

### John's notes:

This arrangement gives you lot's of techniques to concentrate on! Slides, vibrato, sustain, fills and chord 'pinching'. Etc...as well as getting used to moving up and down the fret board.

Notice the E minor scale notes are the same as the G Major scale notes. The difference being the root note is E instead of G. It's this that gives it the 'sad' melancholy sound of the minor scale. By using the E note as the 'home base (root) note you automatically get the 3<sup>rd</sup> note of the scale flattened i.e the G note. Thus adhering to the minor scale rule which is 1 - 2 - **b3** - 4 - 5 - 6 - 7 - 8 (1)

E F# G A B C D E

Play this tune at a speed that suits you. Slow will allow you to be more 'expressive' in your delivery.